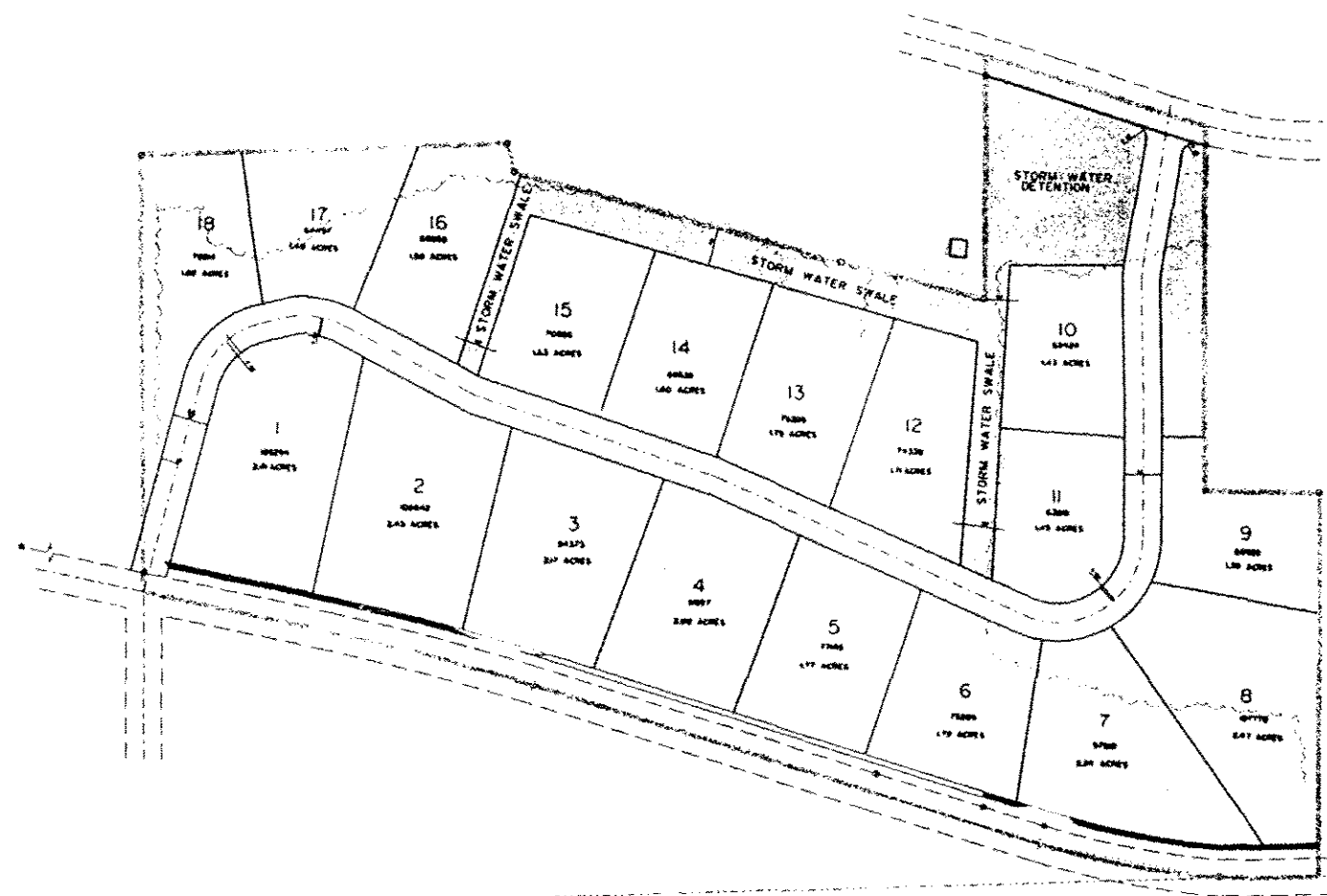
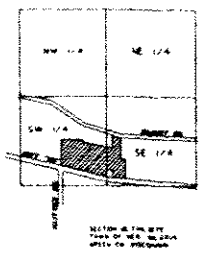
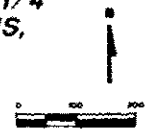


11/16 - 11/11

Rec'd Dec
2009
From Vil Hall

NEUCHATEL SUBDIVISION CONCEPT PLAN PART OF SE1/4-SW1/4, SW1/4-SE1/4 AND NW1/4-SE1/4 OF SECTION 15, T4N, R7E, VILLAGE OF NEW GLARUS, GREEN COUNTY, WISCONSIN



MEAD & HUNT
Professional Land Surveyors
100 West State Street, 10th Floor
Madison, Wisconsin 53703
Phone: 608.271.1100
Fax: 608.271.1101

4/25